



From Data to Dashboard: Our Power BI Journey

Naya Pasham
11/06/2024

A Brief Introduction of Microsoft's BI Tool

What is Power BI



- Microsoft's flagship BI tool, Power BI is one of the most powerful data visualization software.
- First Introduced in 2015, it has ever since evolved as a top-level platform helping multi-sized businesses to transform their raw data into valuable information.
- The BI competencies of Power BI allows the users to build visually stunning interactive reports and dashboards.

- Over the years, Power BI has proved to be an extremely reliable business intelligence platform that excels in visualization and data analysis by offering better speed, efficiency, and supreme understanding.
- According to Microsoft, more than 5 million subscribers are embracing Power BI for modern business intelligence.



A Brief Introduction of Microsoft's BI Tool

Components of Power BI



Power Query

It's a data connection tool that lets you transform, merge, and gather data from multiple sources.



Power Pivot

It's a data modeling tool for modeling simple as well as complex data.



Power View

It's a data visualization tool that generates charts, graphs, maps, etc. Reports in Power View are interactive.



Power Map

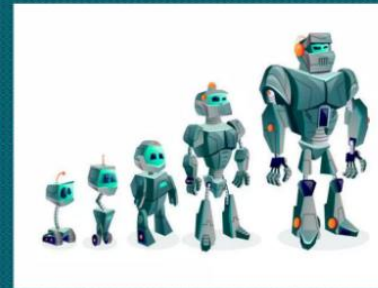
This data visualization tool for building 3D visuals. It visualizes geospatial data in 3D mode.



Power Q&A

It's a question and answers engine. With this language motor, users can ask questions and get answers to those questions.

Versions of Power BI

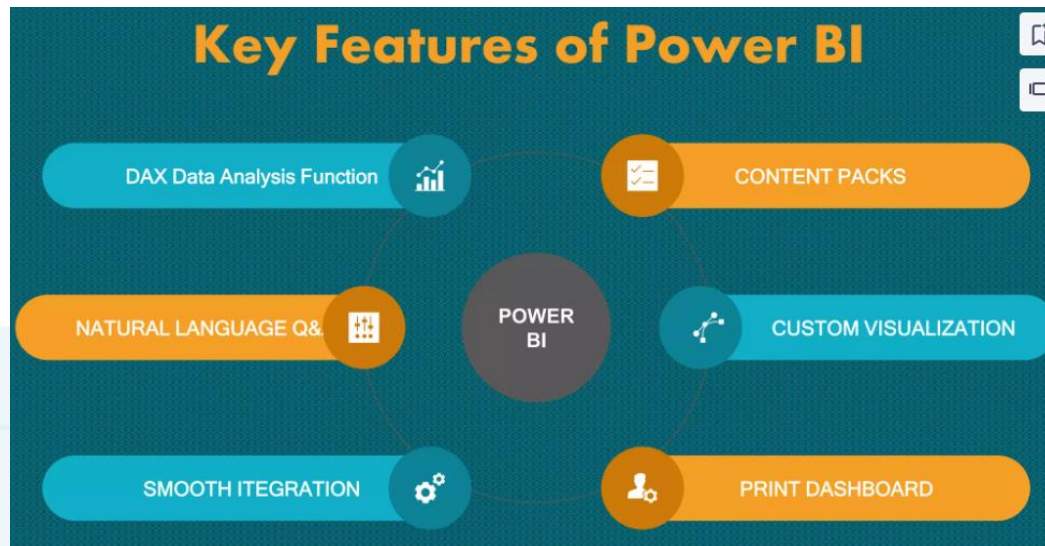


➤ As per the scope of use and enterprise size, Power BI has different versions that suit well for all types of organizational needs.

- ❑ Power BI Desktop
- ❑ Power BI Pro
- ❑ Power BI Premium

➤ Each version of Power BI differs in its pricing, functionalities, and features.

Key Features of Power BI



A modern alternative to spreadsheet reporting

What does Power BI do



- Microsoft Power BI creates reports and surface insights based on organizational data. It connects a wide range of data sources and streamlines the gathered data for a better understanding.
- By spotting and analyzing data patterns, Power BI helps organizations point out past happenings, keep a tab on present on goings, and look ahead into future insights.

What is the need for Power BI

- Power BI allows you to access the data and create dashboard and reports at one go with just a few clicks. This helps in gaining new insights and managing the existing development data in the smoothest manner.
- It is also an easy way to track current growth and then plan future goals accordingly. In a nutshell, it is an ultimate business intelligence tool to make better decisions.
- We can easily import Excel workbooks that contain Power Query queries and Power Pivot models into Power BI Desktop. It then automatically creates reports and visualizations based on the Excel workbook. Once imported, we can continue to improve and refine those reports with Power BI Desktop.



Overview of Power BI at Stonewater

Implementation



Real-Time Data Monitoring



Interactive Dashboards



Automated Reporting



Integration Across Departments

Benefits and Impact



Enhanced Decision-making



Increased Efficiency

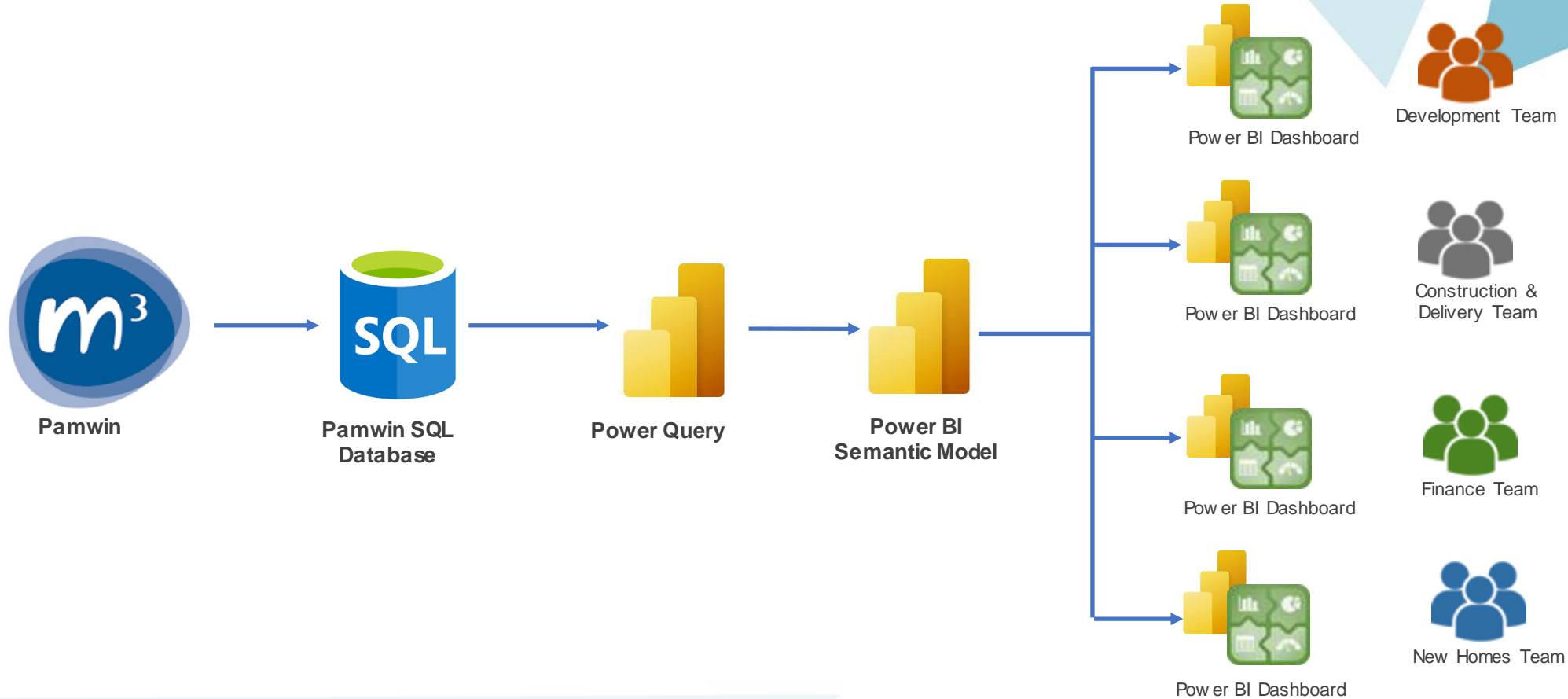


Improved Transparency and Accountability



User Adoption

Power BI Implementation in Stonewater



Information sharing and collaboration among Stonewater users

- Power BI Service :
 - Publish reports to the Power BI service for easy access.
 - Use the Power BI web portal for distribution reports across the organization.
- Sharing Links :
 - Share reports via direct links.
 - Control who can view and interact with the reports by adjusting link permissions.
- Embedding Reports :
 - Embed reports in applications, websites, or SharePoint.
 - Allows seamless integration with other tools.
- Exporting Reports :
 - Exporting reports to PDF, PowerPoint, or Excel for offline sharing.
 - Useful for presenting in meetings or sharing with external stakeholders.
- Comments and Annotations:
 - Add comments directly on reports to discuss insights with team members.
 - Tag colleagues in comments to notify them.
- Data Alerts:
 - Set up data alerts to notify users of important changes or thresholds.
 - Helps keep team members informed about critical metrics in real-time.

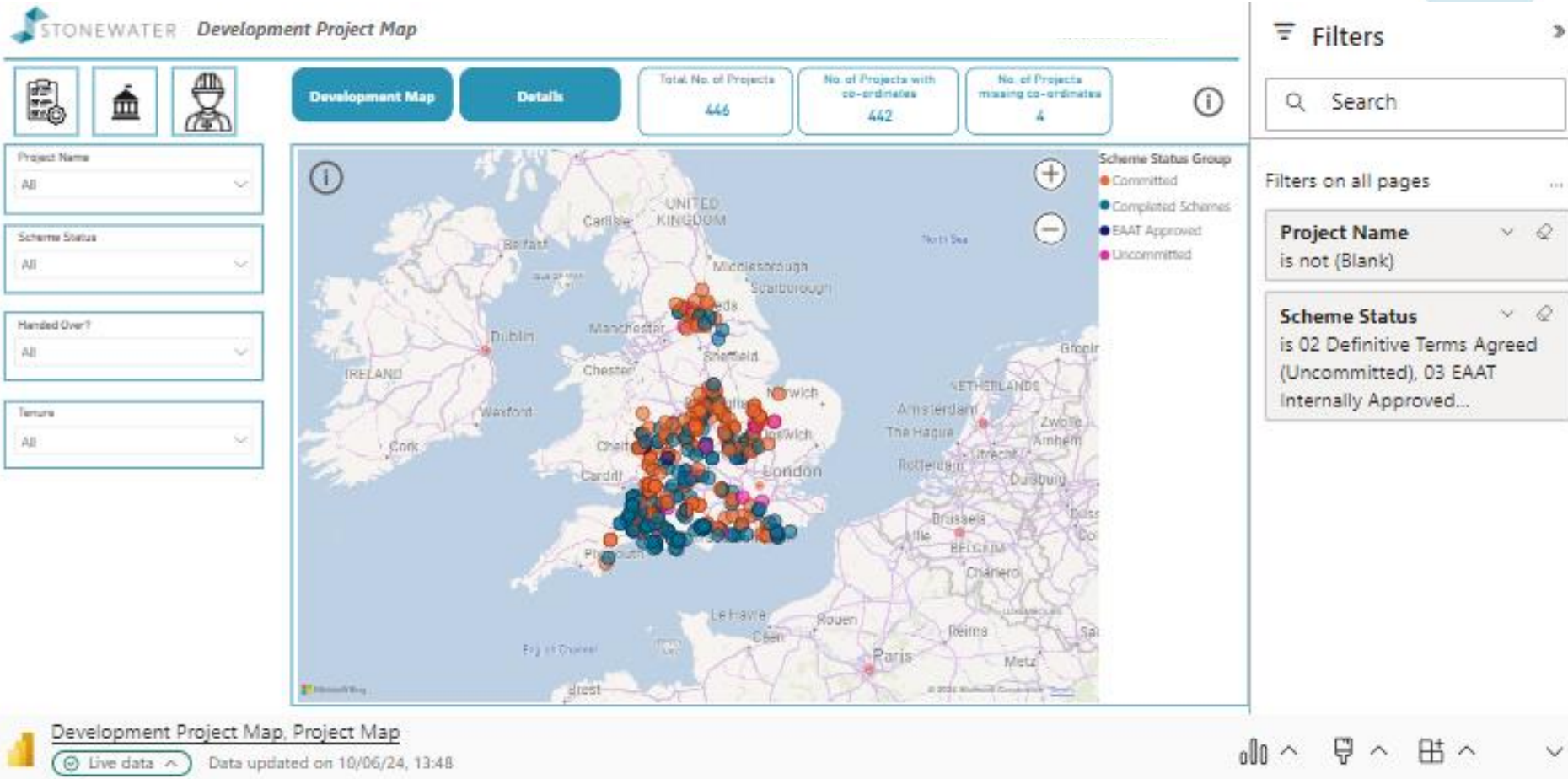
Development Dashboard



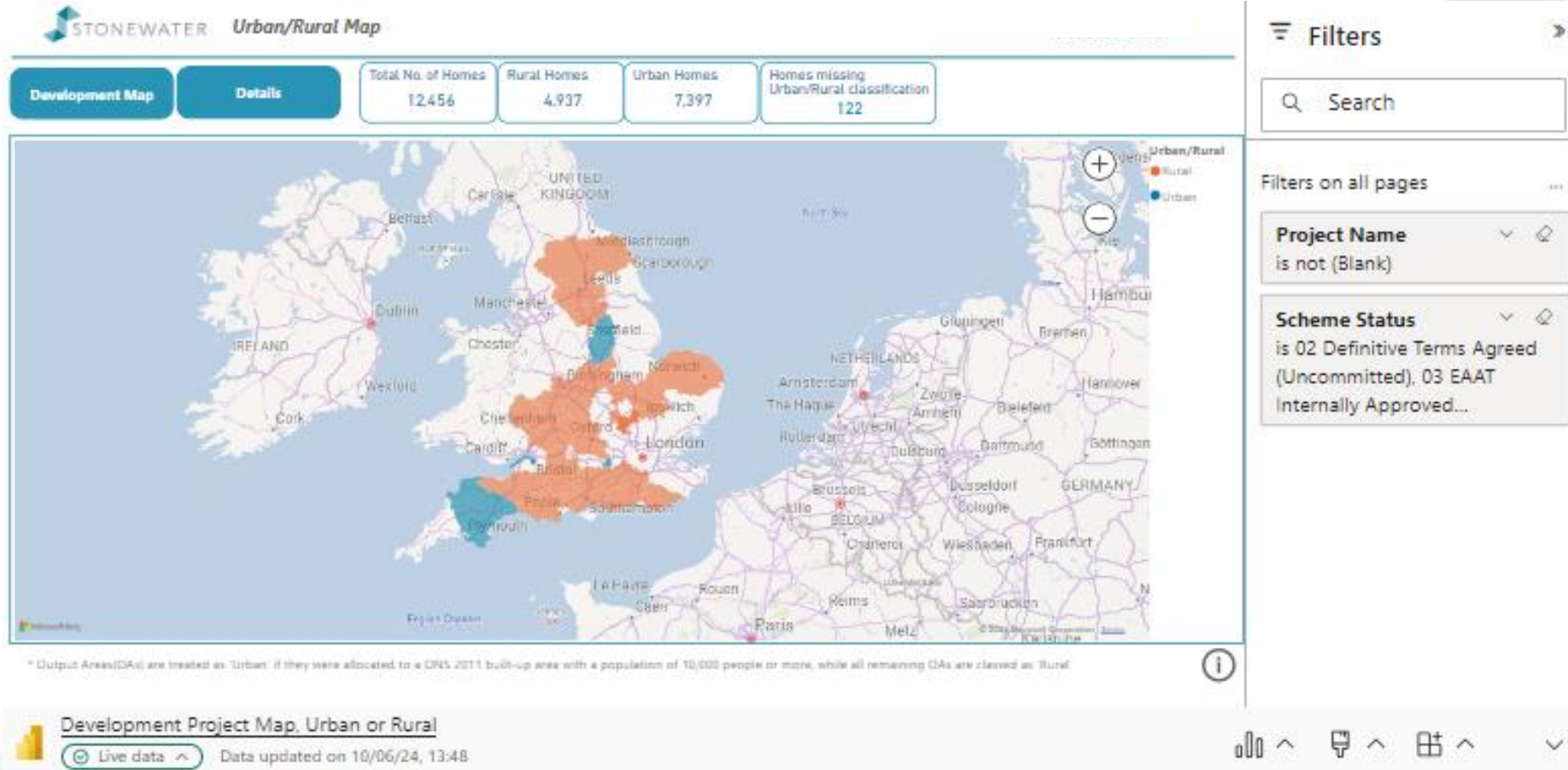
Construction & Delivery Report, Select Filters
 Live data 10/06/24, 13:48



Development Project Map



Development Map – Urban/Rural Classification



Value for Money – Data Quality Reporting

Missing VFM details STONEWATER

Handover FY, Quarter: 2024-25 | Project Name: All | Scheme Owner: All | HOD: All | Handed Over?: All

Project Name	Scheme Code	Plot No	Tenure	Additional Editor	Scheme Owner	HOD	Handed over?	Forecast Handover Date	Hand Overs	VFM Smart Housing Features	VFM Ability to ac [®] high speed broad infrastructure
Astons Coaches, Bath Rd, V2	P7660	001	Shared Ownership	Ceri Borthwick	Leigh Ann Jones	Marc Howard	No	05/02/25	1	✗	✓
Astons Coaches, Bath Rd, V2	P7660	002	Shared Ownership	Ceri Borthwick	Leigh Ann Jones	Marc Howard	No	05/02/25	1	✗	✓
Astons Coaches, Bath Rd, V2	P7660	003	Shared Ownership	Ceri Borthwick	Leigh Ann Jones	Marc Howard	No	05/02/25	1	✗	✓
Astons Coaches, Bath Rd, V2	P7660	004	Shared Ownership	Ceri Borthwick	Leigh Ann Jones	Marc Howard	No	05/02/25	1	✗	✓
Astons Coaches, Bath Rd, V2	P7660	005	Shared Ownership	Ceri Borthwick	Leigh Ann Jones	Marc Howard	No	05/02/25	1	✗	✓
Astons Coaches, Bath Rd, V2	P7660	017	Shared Ownership	Ceri Borthwick	Leigh Ann Jones	Marc Howard	No	05/02/25	1	✗	✓
Astons Coaches, Bath Rd, V2	P7660	018	Shared Ownership	Ceri Borthwick	Leigh Ann Jones	Marc Howard	No	05/02/25	1	✗	✓
Astons Coaches, Bath Rd, V2	P7660	042	Shared Ownership	Ceri Borthwick	Leigh Ann Jones	Marc Howard	No	05/02/25	1	✗	✓
Astons Coaches, Bath Rd, V2	P7660	043	Shared Ownership	Ceri Borthwick	Leigh Ann Jones	Marc Howard	No	05/02/25	1	✗	✓
Astons Coaches, Bath Rd, V2	P7660	044	Shared Ownership	Ceri Borthwick	Leigh Ann Jones	Marc Howard	No	05/02/25	1	✗	✓
Astons Coaches, Bath Rd, V2	P7660	045	Shared Ownership	Ceri Borthwick	Leigh Ann Jones	Marc Howard	No	05/02/25	1	✗	✓
Astons Coaches, Bath Rd, V2	P7660	046	Shared Ownership	Ceri Borthwick	Leigh Ann Jones	Marc Howard	No	05/02/25	1	✗	✓
Astons Coaches, Bath Rd, V2	P7660	051	Shared Ownership	Ceri Borthwick	Leigh Ann Jones	Marc Howard	No	05/02/25	1	✗	✓
Baltonsborough	P7713	14	Social Rent	Danielle Couchman	Ania Proszowska	Peter Crouch	No	23/07/24	1	✗	✗
Baltonsborough	P7713	15	Social Rent	Danielle Couchman	Ania Proszowska	Peter Crouch	No	23/07/24	1	✗	✗
Total									1,542		

Filters

Value for Money - Unit Details Report, Missing Details
 Live data | Data updated on 10/06/24, 13:48

📊 ^ 🗑 ^ 🏠 ^ ▾

Mobile Dashboard



Power BI offers a set of mobile apps for iOS and Android mobile devices

Next Steps

#	Action	Owner
1	Provision of forecast capitalized interest calculation data	m3
2	Pamwin version 4 views testing	Stonewater

Questions & Discussion



Thank you for your time. Please feel free to ask anything related to today's presentation. Our team is here to address your inquiries.